



## Aldsworth Close, Maida Vale, London

Subject To Contract £425,000 | Leasehold

Contact us about this property

337 West End Lane, West Hampstead, London, NW6 1RS

E: [nw6@alexanders-uk.com](mailto:nw6@alexanders-uk.com)

T: 0207 431 0666

[www.alexanders-uk.com](http://www.alexanders-uk.com)

# Alexanders

Property Consultants

---



## About This Property

A bright and spacious (531 sq ft) 1 bedroom apartment situated on the first floor of this low rise purpose built block in Little Venice ideally located close to shops and amenities. The property comprises of a bright reception room leading out onto a large private balcony overlooking the Regents canal, good size double bedroom, separate fitted kitchen with plumbing for a washing machine and space for a tumble dryer/dishwasher. The space is completed with a family bathroom.





The property further benefits from excellent storage, double glazing, security entry system and close proximity to Warwick Ave tube (Bakerloo), Paddington (District and Circle) and Royal Oak (Hammersmith + City) underground stations.

Viewings advised.



# Alexanders

Property Consultants

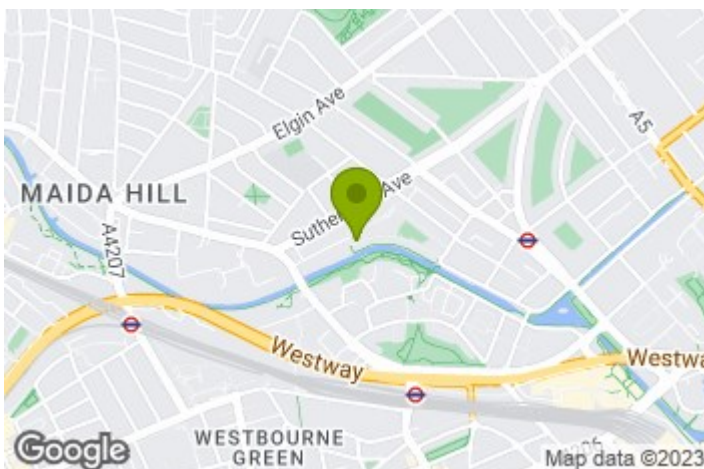
 1 Bedroom |  1 Reception |  1 Bathroom |  67 D

## Property Features

- 1 double bedroom
- Bright and spacious reception
- Separate fitted kitchen
- Bathroom
- Large balcony overlooking canal
- Large storage cupboards throughout the apartment
- Close to transport links
- Moments to shops, restaurants and amenities

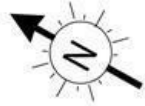
## Property Size


531.00 sq ft

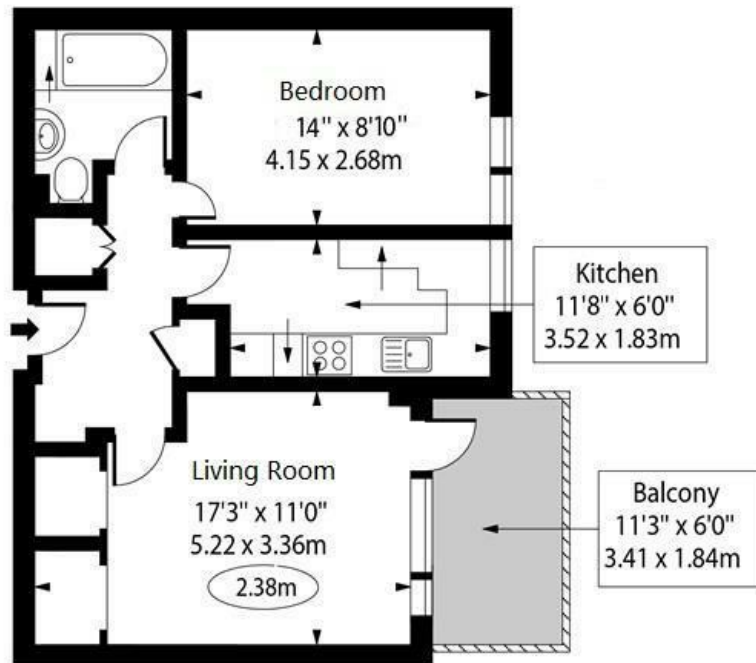


## Nearest Transport Links

## Aldsworth Close, W9



 - Ceiling Height



Second Floor

Approx Gross Internal Area 531 Sq Ft - 49.33 Sq M

For Illustration Purposes Only - Not To Scale Floor Plan by [www.nogaphotostudio.com](http://www.nogaphotostudio.com) Ref: No.46334

This floor plan should be used as a general outline for guidance only. Any intending purchaser or lessee should satisfy themselves by inspection, searches, enquiries and full survey as to the correctness of each statement. Any areas, measurements or distances quoted are approximate and should not be used to value a property or be the basis of any sale or let.

Contact us about this property

337 West End Lane, West Hampstead, London, NW6 1RS

E: [nw6@alexanders-uk.com](mailto:nw6@alexanders-uk.com)

T: 0207 431 0666

[www.alexanders-uk.com](http://www.alexanders-uk.com)

